

TravelMate P414-52
TravelMate Spin P414RN-52

LIFECYCLE EXTENSION GUIDE

Self-Repair 1-1

Disassembly Procedures 1-3

Electronic Boards Diagrams 1-45

Troubleshooting 1-46

FRU (Field Replaceable Unit) List 1-47

Exploded Diagrams 1-48

Software Update 1-52

Personal Data Removal 1-53

Self-Repair

This chapter highlights the limited self-repair capabilities of the product.

Prior performing self-repair, familiarize yourself with the Safety Guidelines and Recommended Equipment sections first as described in the chapter "[Disassembly Procedures](#)".

Depending on model, the following key components are eligible for self-repair (if applicable);

- Battery pack
- HDD / SSD module
- DIMM module(s)
- WLAN module
- LTE module

If a particular key component is listed and thus would be eligible for self-repair, but is not described in the "[Disassembly Procedures](#)" section, then this component is either not present on the respective model, or it is present but embedded on the motherboard and therefore not eligible for self-repair.

⇒ **NOTE:**

Do not attempt to replace other components than those listed above.

⇒ **NOTE:**

For replacement parts, always use only Acer certified components in order to safeguard quality, optimum system performance, stability and reliability of the product.

⇒ **NOTE:**

Any damage to the product that occur during self-repair, or which has occurred as a result of a careless or unsuccessful self-repair attempt, is not covered by the standard product warranty.

System BIOS & Driver Updates

Visit <http://www.acer.com/support> to discover the available system BIOS and Drivers for this product. After selecting the desired country/language, either enter the model name or product serial number, or select the product from the list of suggested models in order to get access to product-specific software and documentation.

To update the system BIOS:

- Download the desired system BIOS version from the website
- Unzip the downloaded file to your computer
- Double-click the extracted file in order to initiate the update process
- The update process itself is fully automated and its progress is visualized by means of a progress indicator
- A visual notification is shown when the update is complete

⇒ **NOTE:**





Upgrading the system BIOS incorrectly, or intermittence of the system BIOS update process could harm the product.

⇒ **NOTE:**

System BIOS upgrades or downgrades, if not performed by an Acer Service Center or authorized Service Partner, are at own risk.

To update Drivers:

Run Windows Update in order to get the latest drivers from Acer:

- Select the Start  button
- Go to **Settings**  > **Update & Security**  > **Windows Update** 
- Available Drivers will automatically be listed on the screen. Press **Download** to start the download of the respective driver
- Installation of the driver will start automatically once the download is completed

Software Recovery

This product has embedded software recovery tools which can be used to either perform a partial or full software recovery, but also to create a Factory Default recovery media.

For more information about the software recovery options, how to perform a software recovery or creating a Factory Default recovery media, please refer to the chapter "Recovery" which is available in the User Manual of the product.

⇒ **NOTE:**

In the event of not being able to create a Factory Default recovery media, it is possible to obtain a copy of the recovery media through Acer Customer Service (<http://www.acer.com/support>)

This is not a free of charge service.

Disassembly Procedures

Safety Guidelines

This chapter contains step by step procedures on how to remove and de-install components from the computer. Use the following safety guidelines to ensure your personal safety. Each procedure included in this chapter assumes that you are preparing your computer for recycling and disposal. **By performing any of these procedures you acknowledge that any remaining warranty applicable to your computer will be voided. Before you start any of the procedures in this chapter, make sure to read the following safety guidelines and the respective instructions within the chapter.**

CAUTION!

- Turn off your computer and disconnect all power sources before opening the computer cover or panels.
- To avoid electrostatic discharge, ground yourself by using a wrist grounding strap or by periodically touching an unpainted metal surface at the same time as touching a connector on the back of the computer.
- Take off any metal objects on your arms or fingers such as bracelets, rings or watches and make sure your hands are completely dry. Even if your unit is unplugged, there may still be some remaining electric charge.
- If a component does not come out easily, do not forcefully remove it. Instead, check that you are removing it correctly and that no wires or other parts are in the way.
- When you disconnect a cable, pull on its connector or on its pull-tab, not on the cable itself. Some cables have connectors with locking tabs; if you are disconnecting this type of cable, press in on the locking tabs before you disconnect the cable.

Recommended Equipment

The following equipment are recommended to do the following maintenance procedures:

- Wrist grounding strap and conductive mat
- Flat screwdriver
- Philips screwdriver
- Polydrive screwdriver
- Plastic tweezers
- Flat plastic pry

WEEE Annex VII Component

These components are classified as requiring selective treatment:

- Battery pack
- DIMM modules
- RTC battery
- WLAN module
- LTE module
- SSD module
- LTE board
- Card reader board
- Touchpad module
- Mainboard
- LCD panel

Pre-disassembly Instructions

Do the following prior to starting any maintenance procedures:

1. Place the system on a stable work surface.
2. Remove the AC adapter from any of the ports (A) or (B) of the system and from peripherals (Figure 1-1).
3. Remove all cables from the system.

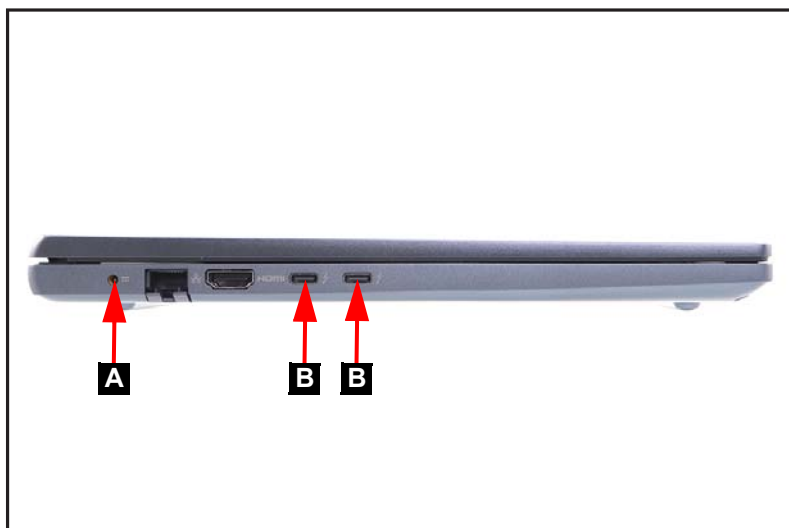


Figure 1-1. AC Adapter Outlet

4. Remove the microSD card from the microSD card slot (C). Then remove the smart card from the smart card slot (D) (Figure 1-2).

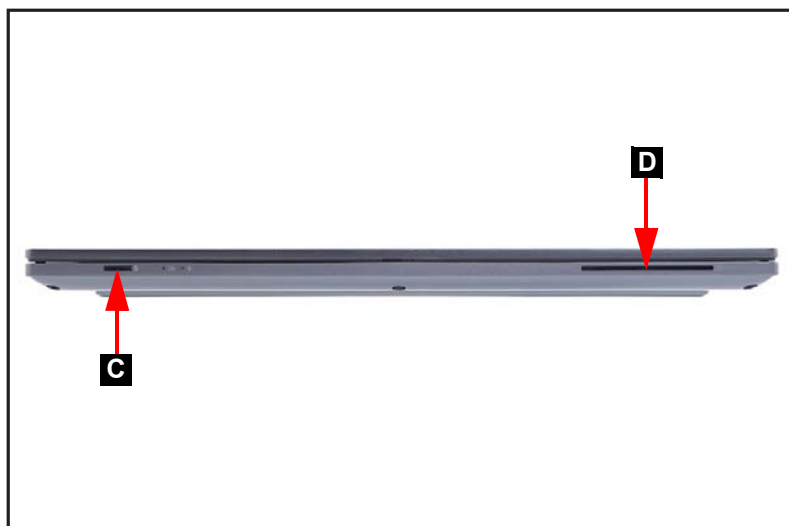


Figure 1-2. microSD Card and Smart Card Removal

5. Remove the stylus pen from the stylus pen slot (E) (Figure 1-3).
6. Insert the eject tool into the hole on the SIM card tray (F). Then push to eject the card tray and remove the SIM card (Figure 1-3).

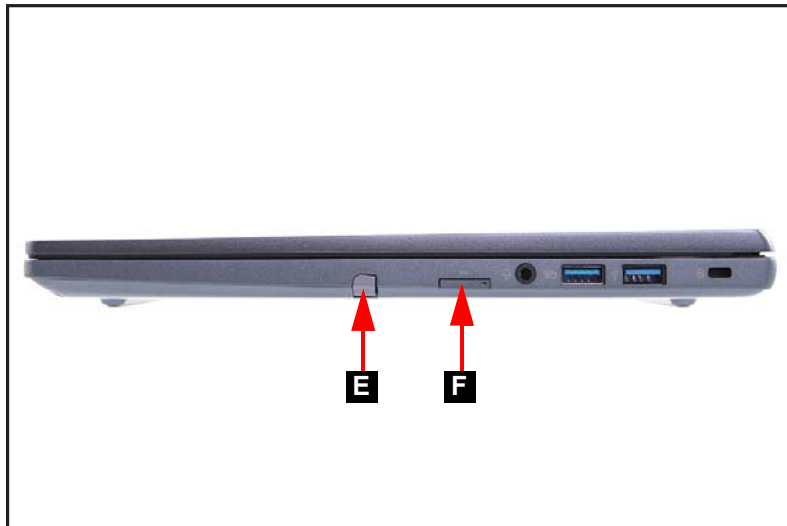


Figure 1-3. Stylus Pen and SIM Card Removal

⇒ **NOTE:**

Make sure the system is completely powered off.

Base Cover Removal

1. Remove twelve (12) screws from the base cover ([Figure 1-4](#)).

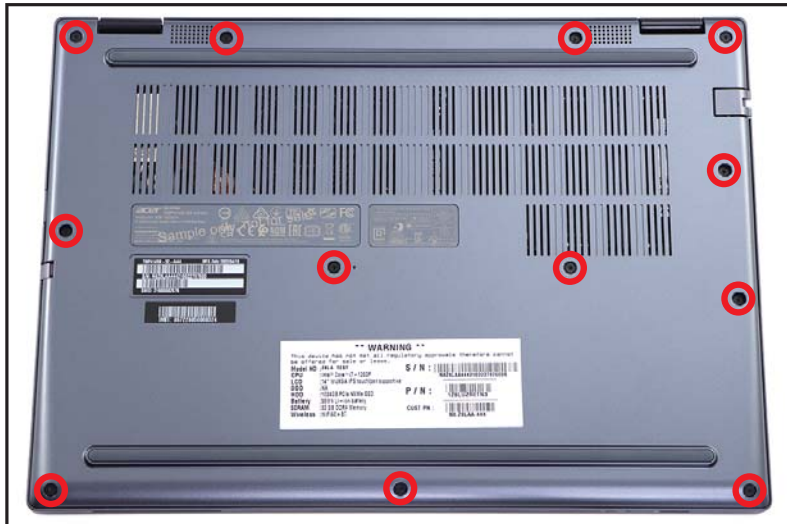


Figure 1-4. Base Cover Removal

2. Carefully pry up the base cover starting from the upper left side edge to release the latches ([Figure 1-5](#)).



Figure 1-5. Base Cover Removal

3. Continue releasing the remaining latches. Then remove the base cover from the system ([Figure 1-6](#)).



Figure 1-6. Base Cover Removal

Battery Pack Removal

Prerequisite:

Base Cover Removal

1. Find the battery pack (A) in the system (Figure 1-7).
2. Detach the tape (B) securing the battery cable connection (Figure 1-7).
3. Detach the transparent mylar (C) securing the cables (Figure 1-7).

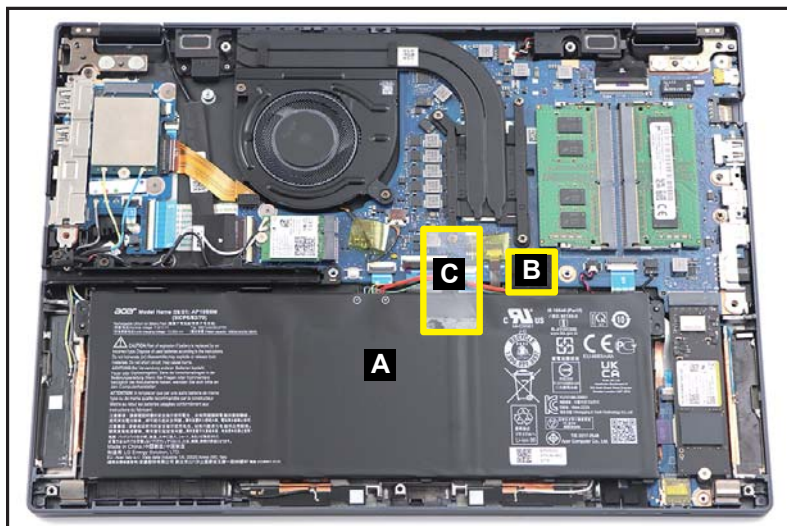


Figure 1-7. Battery Pack Removal

4. Disconnect the battery cable from the mainboard connector (D) (Figure 1-8).



Figure 1-8. Battery Pack Removal

5. Slightly lift the upper side of the battery pack to release it from the guide pins (E). Then remove the battery pack from the system (Figure 1-9).

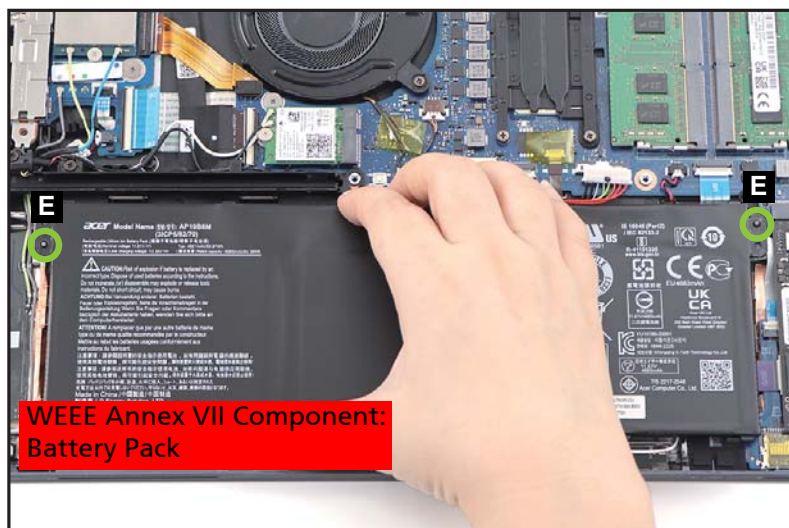


Figure 1-9. Battery Pack Removal

+ **IMPORTANT:**

Follow local regulations for battery disposal.

DIMM Modules Removal

Prerequisite:

Battery Pack Removal

1. Push the DIMM module clips (A) outwards (Figure 1-10).

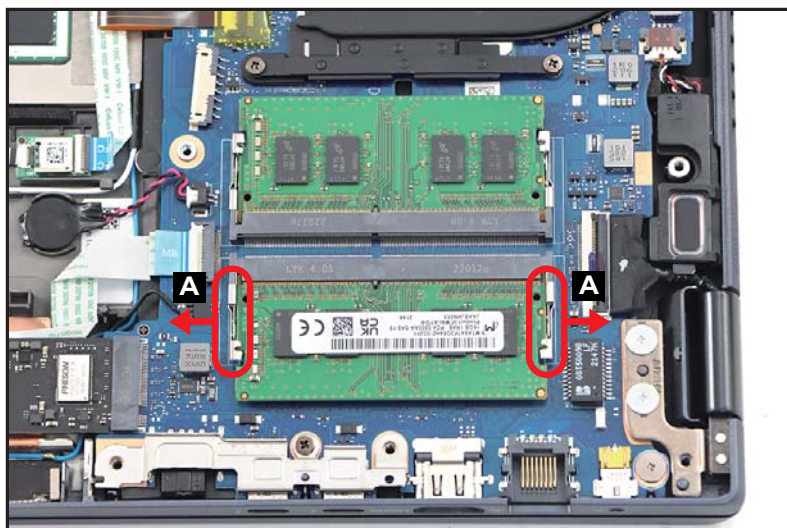


Figure 1-10. DIMM Modules Removal

2. Disconnect the DIMM module (B) from the mainboard connector (C) (Figure 1-11). Then remove the DIMM module.

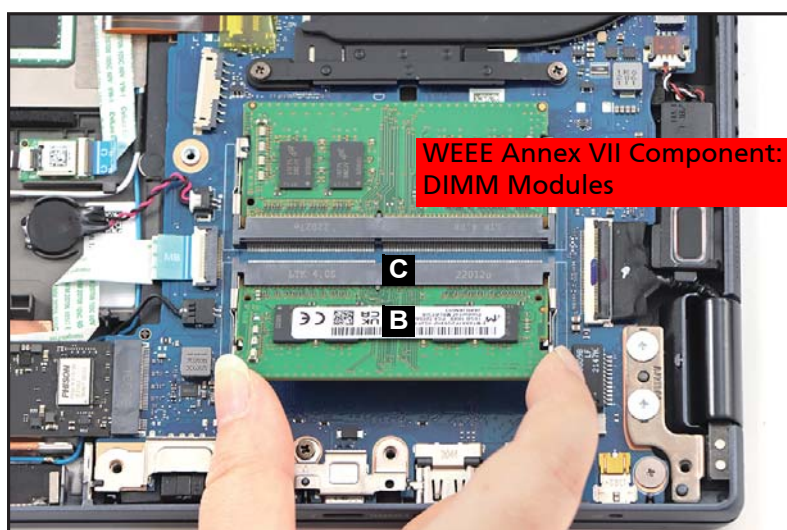


Figure 1-11. DIMM Modules Removal

3. Repeat steps 1~3 to remove another DIMM module.

RTC Battery Removal

Prerequisite:

Battery Pack Removal

1. Disconnect the RTC battery cable from the mainboard connector (A) (Figure 1-12).
2. Using plastic tweezers, carefully pry to detach the adhesive tape underneath the RTC battery (B). Then remove the RTC battery (Figure 1-12).

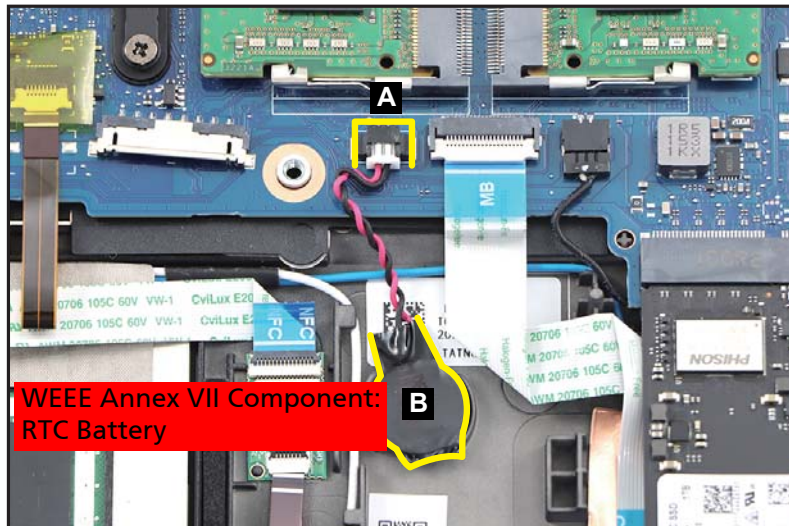


Figure 1-12. RTC Battery Removal

+ IMPORTANT:

Follow local regulations for battery disposal.

WLAN Module Removal

Prerequisite:

Battery Pack Removal

1. Find the WLAN module (A) on the top assembly (Figure 1-13).

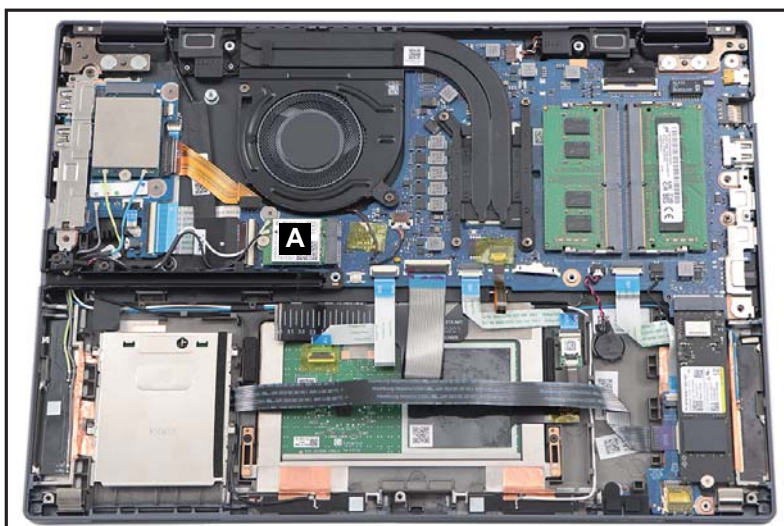


Figure 1-13. WLAN Module Location

2. Disconnect the WLAN antennas cables from the WLAN module connectors (B) (Figure 1-14).
3. Remove one (1) screw securing the WLAN module (Figure 1-14).

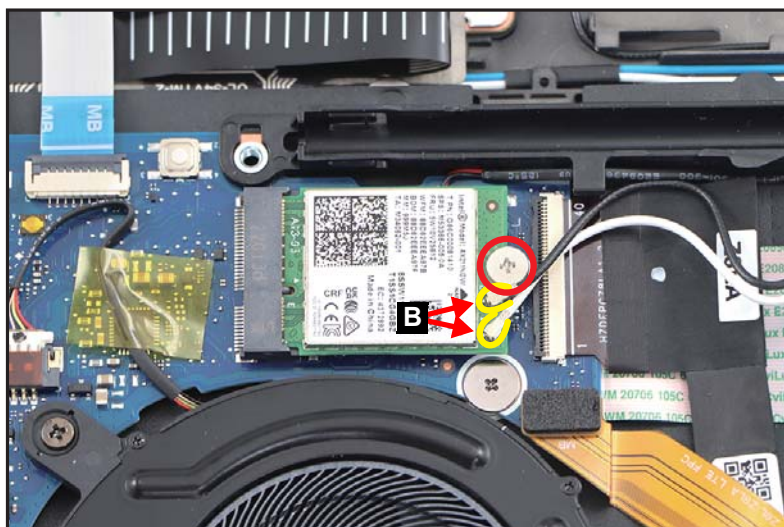


Figure 1-14. WLAN Module Removal

4. Disconnect the WLAN module from the mainboard connector (C) (Figure 1-15). Then remove the WLAN module.



Figure 1-15. WLAN Module Removal

LTE Module Removal

Prerequisite:

Battery Pack Removal

1. Disconnect the LTE antennas cables from the LTE module connectors (A) (Figure 1-16).
2. Remove one (1) screw securing the LTE module (Figure 1-16).

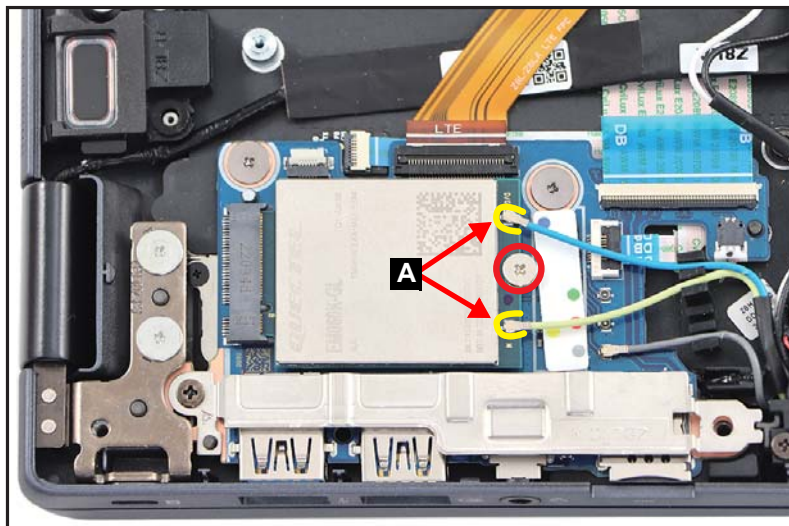


Figure 1-16. LTE Module Removal

3. Disconnect the LTE module (B) from the mainboard connector (C) (Figure 1-17). Then remove the LTE module.

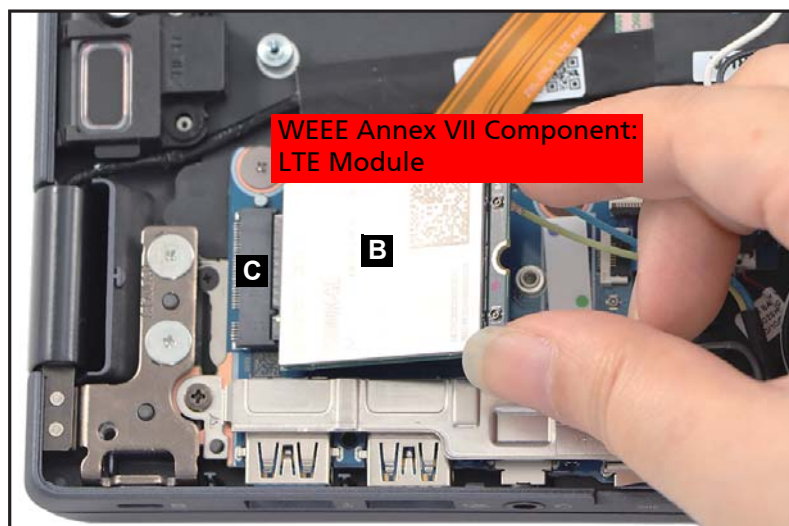


Figure 1-17. LTE Module Removal

LCD Module Removal

Prerequisite:

[Battery Pack Removal](#)

⇒ NOTE:

The LCD cable includes the G-sensor cable, light sensor cable, and TOF sensor cable. For Convertible model, the eDP cable includes the LCD panel cable, touch control board cable, and camera cable.

For Clamshell model, the eDP cable includes the LCD panel cable and camera cable.

1. Disconnect one end of the LTE FPC from the LTE board connector (A). Then disconnect the other end of the LTE FPC from the mainboard connector (B) ([Figure 1-18](#)).
2. Disconnect the WLAN antennas cables from the WLAN module connectors (C) ([Figure 1-18](#)).

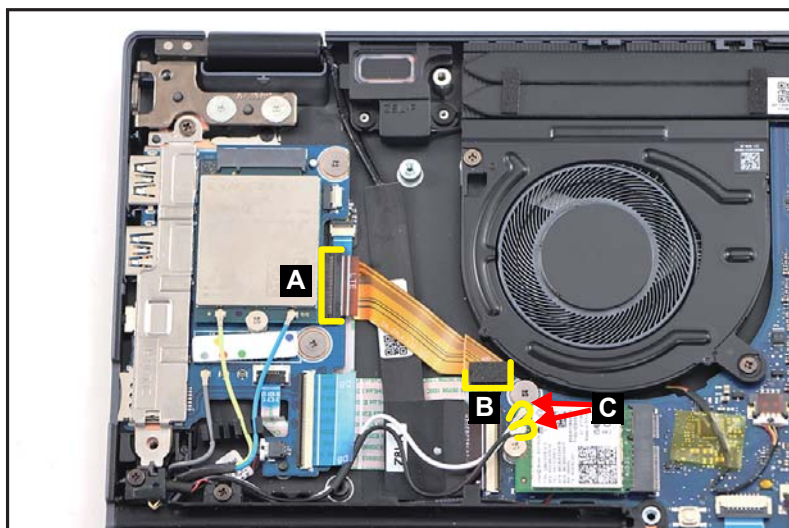


Figure 1-18. LCD Module Removal

3. Disconnect the LCD cable from the mainboard connector (D). Then detach the cable and unroute it from the cable guides as shown in [Figure 1-19](#).

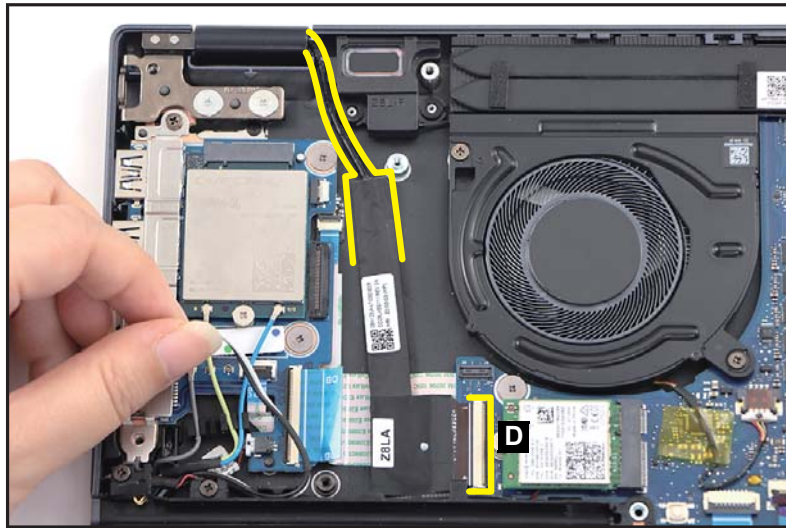


Figure 1-19. LCD Module Removal

4. Disconnect the eDP cable from the mainboard connector (E). Then unroute the cable from the cable guides as shown in [Figure 1-20](#).

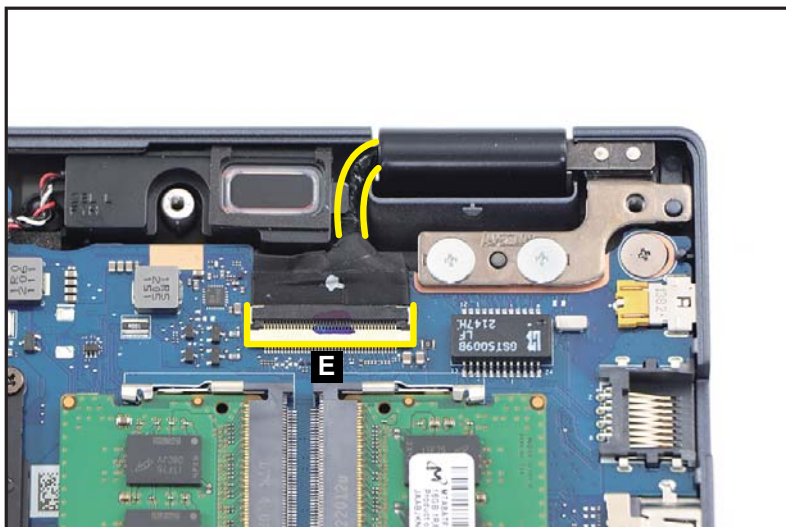


Figure 1-20. LCD Module Removal

5. Remove four (4) screws securing the LCD hinges (Figure 1-21).

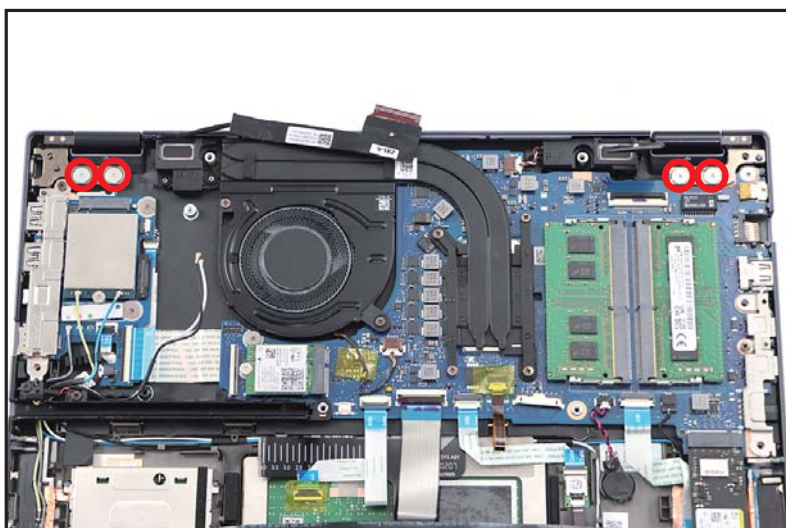


Figure 1-21. LCD Module Removal

6. Lift the top assembly until it is fully open (Figure 1-22).

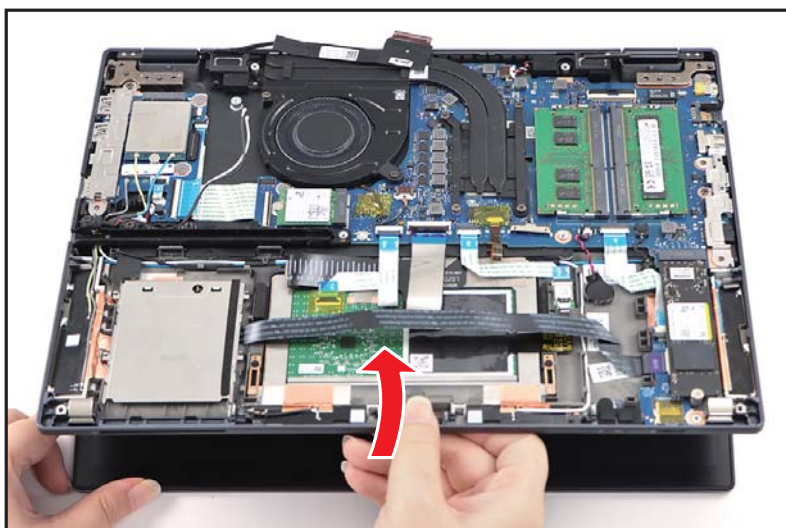


Figure 1-22. LCD Module Removal

7. Close the top assembly and lift both LCD hinges until they are fully extended (Figure 1-23).

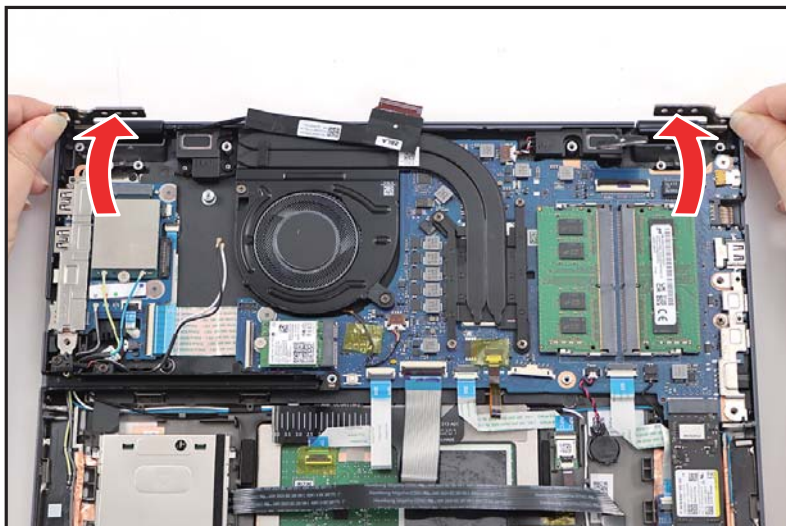


Figure 1-23. LCD Module Removal

8. Open the top assembly again and lift to remove the top assembly (Figure 1-24).

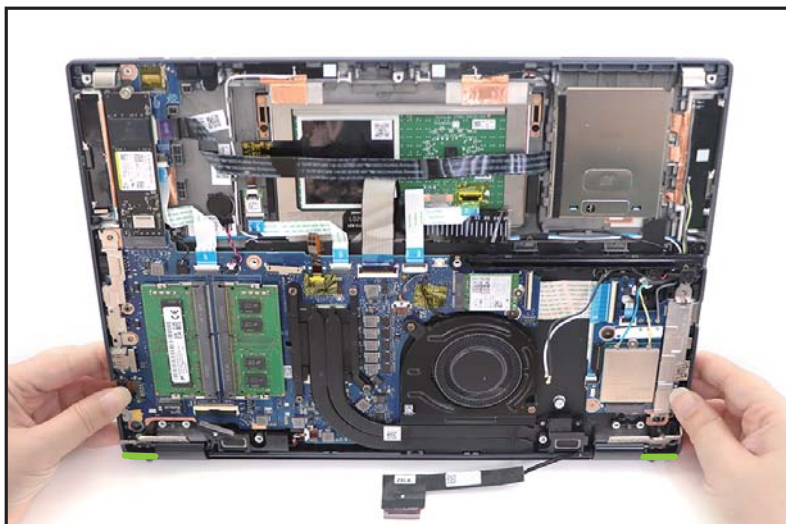


Figure 1-24. LCD Module Removal

⚠ CAUTION:

Make sure all cables and antennas are moved away from the device to avoid damage during removal.

SSD Module Removal

Prerequisite:

Battery Pack Removal

1. Remove one (1) screw securing the SSD module (Figure 1-25).



Figure 1-25. SSD Module Removal

2. Disconnect the SSD module (A) from the mainboard connector (B) (Figure 1-26). Then remove the SSD module.



Figure 1-26. SSD Module Removal

LTE Board Removal

Prerequisite:

[LTE Module Removal](#) or [LCD Module Removal](#)

1. Remove one (1) screw (A) securing the I/O bracket ([Figure 1-27](#)).

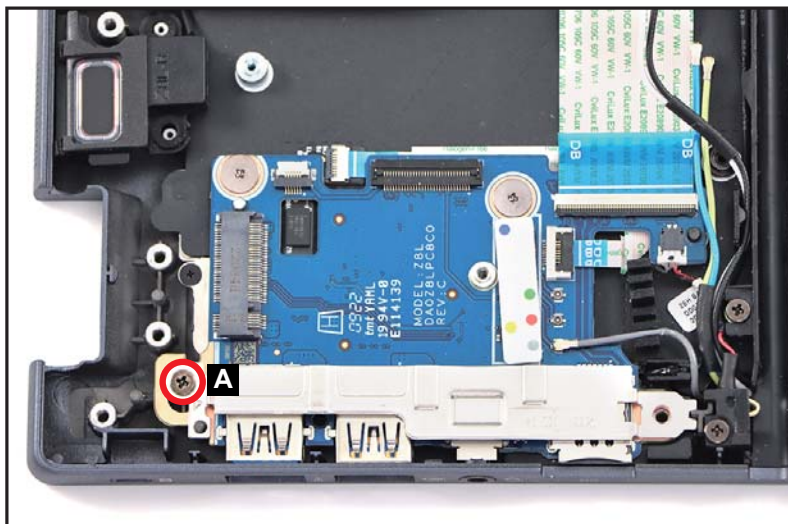


Figure 1-27. LTE Board Removal

2. Release the I/O bracket (B) from the guide pin (C) and guide tab (D) ([Figure 1-28](#)). Then remove the bracket.

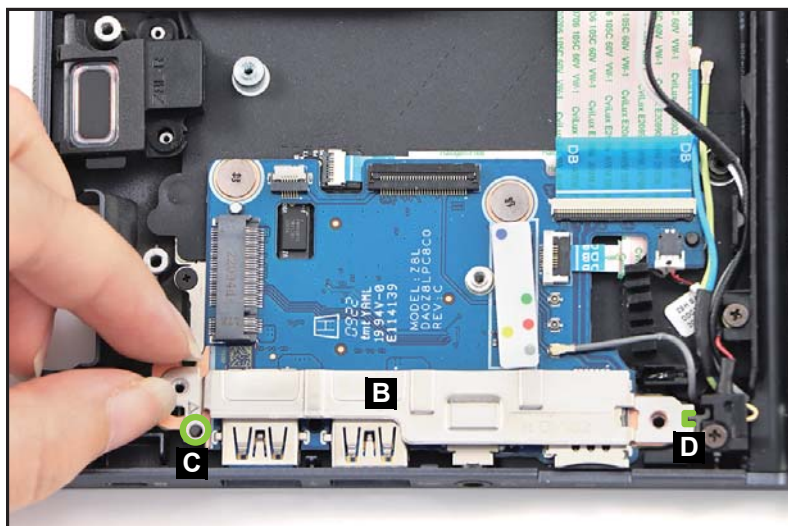


Figure 1-28. LTE Board Removal

3. Disconnect the P-sensor cable from the LTE board connector (E) (Figure 1-29).
4. Disconnect the fingerprint FFC from the LTE board connector (F) (Figure 1-29)
5. Disconnect the stylus charger cable from the LTE board connector (G) (Figure 1-29).
6. Disconnect the DB FFC from the LTE board connector (H) (Figure 1-29).
7. Remove two (2) screws (I) securing the LTE board (Figure 1-29).

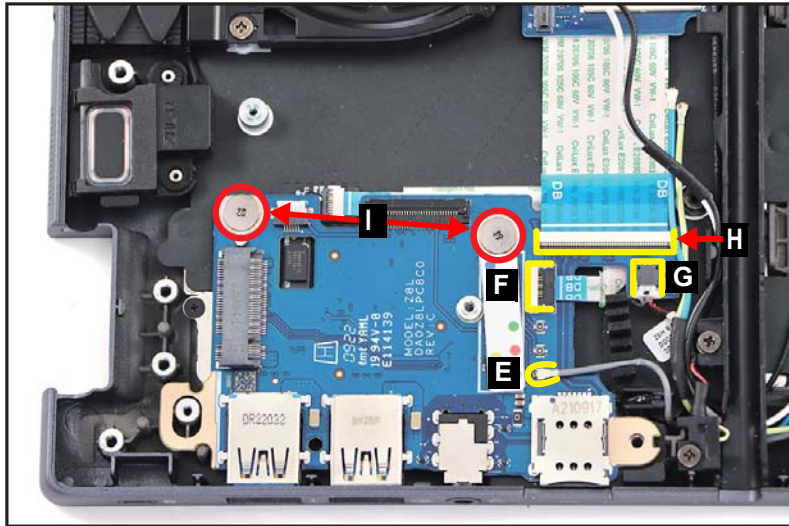


Figure 1-29. LTE Board Removal

⚠ CAUTION:

Fingerprint FFC (Flexible Flat Circuit) and DB FFC can be damaged if removed while the LTE board connectors are locked.

8. Release the LTE board (J) from the I/O connectors slots and guide pins (K) on the top assembly (Figure 1-30). Then remove the LTE board.

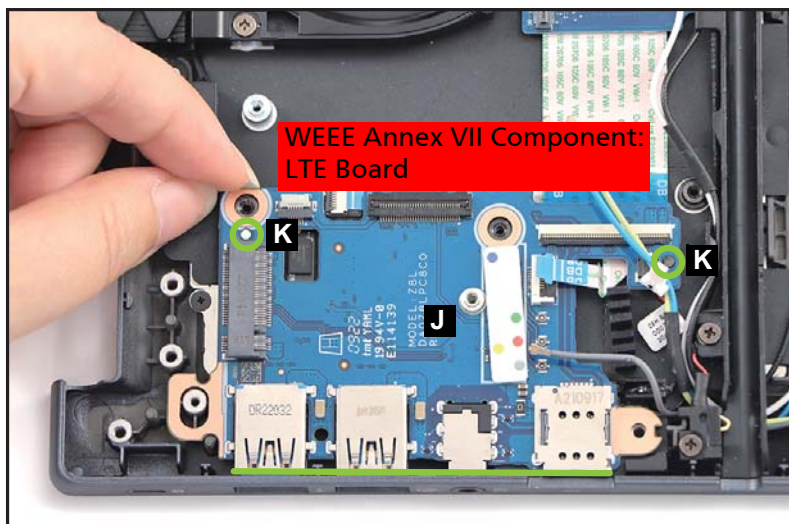


Figure 1-30. LTE Board Removal

Card Reader Board Removal

Prerequisite:

SSD Module Removal

1. Detach the sponge (A) from the card reader board ([Figure 1-31](#)).

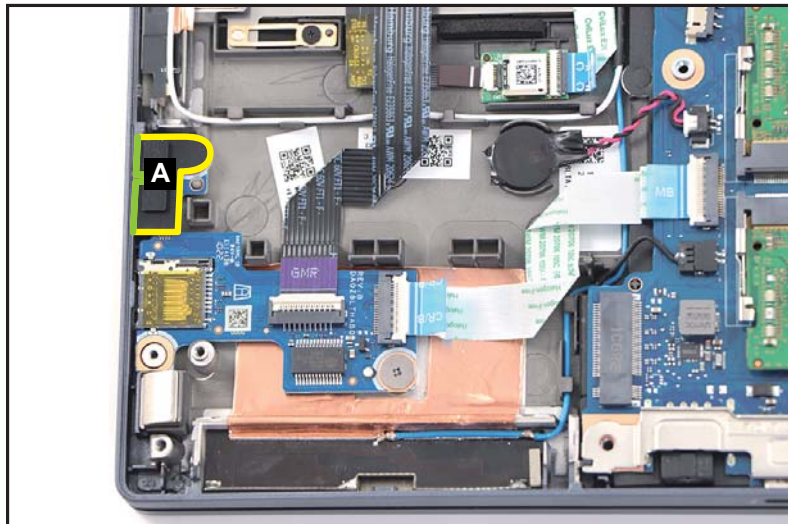


Figure 1-31. Card Reader Board Removal

2. Disconnect the smart card reader FFC from the card reader board connector (B) (Figure 1-32).
3. Disconnect one end of the card reader board FFC from the card reader board connector (C). Then disconnect the other end of the FFC from the mainboard connector (D) (Figure 1-32).
4. Remove two (2) screws securing the card reader board (Figure 1-32).

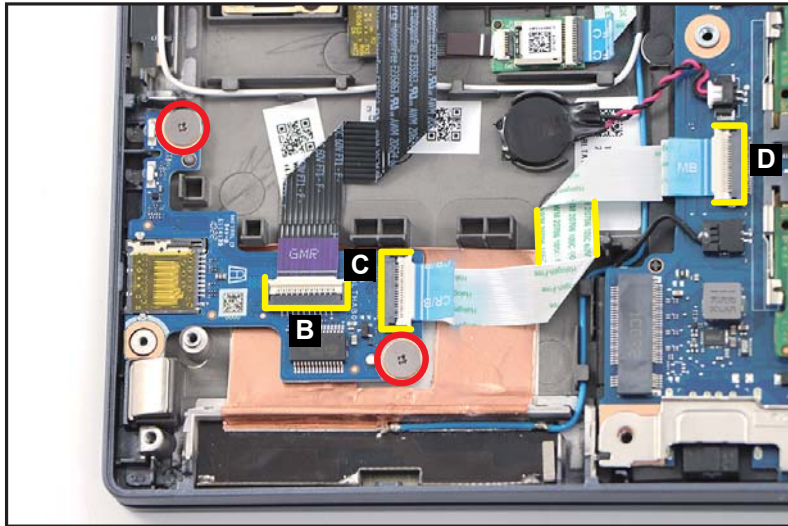


Figure 1-32. Card Reader Board Removal

⚠ CAUTION:

Smart card reader FFC (Flexible Flat Circuit) and card reader board FFC can be damaged if removed while the card reader board and mainboard connectors are locked.

When removing the card reader board FFC, carefully lift the portion of FFC (highlighted by the yellow lines) to detach it from the adhesive tape underneath as shown in Figure 1-32.

5. Release the card reader board (E) from the card reader slot and guide pins (F) (Figure 1-33). Then remove the card reader board.

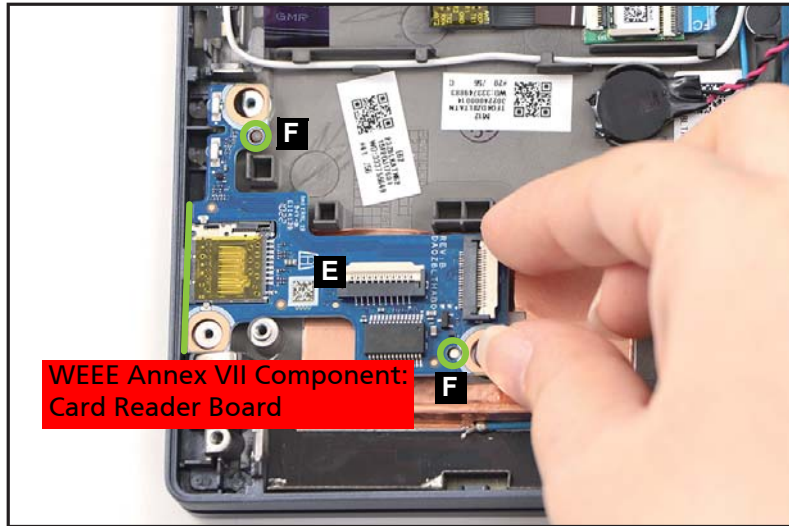


Figure 1-33. Card Reader Board Removal

Touchpad Module Removal

Prerequisite:

SSD Module Removal

1. Disconnect the smart card reader FFC from the card reader board connector (A) (Figure 1-34).
2. Detach the adhesive tape (B) securing the touchpad FFC connection (Figure 1-34).

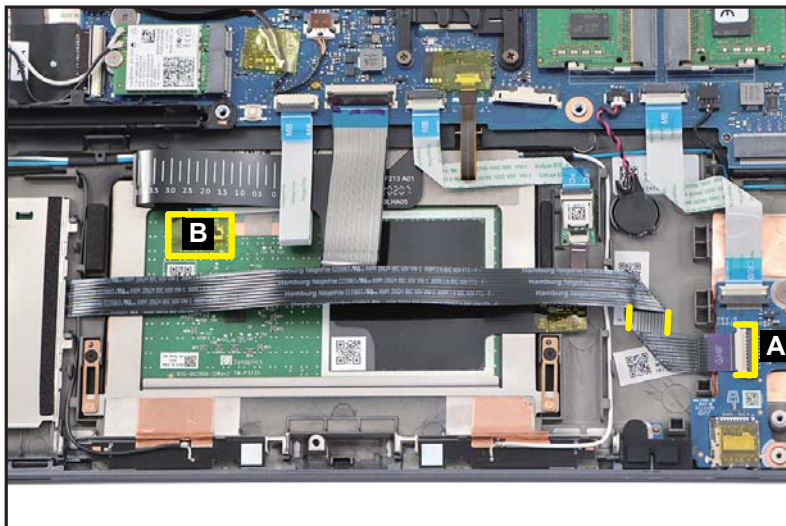


Figure 1-34. Touchpad Module Removal

⚠ CAUTION:

Smart card reader FFC (Flexible Flat Circuit) can be damaged if removed while the card reader board connector is locked. When removing the smart card reader FFC, carefully lift the portion of FFC (highlighted by the yellow lines) to detach it from the adhesive tape underneath as shown in Figure 1-34.

3. Disconnect the touchpad FFC (C) from the touchpad module and mainboard connectors. Then carefully lift the portion of FFC (highlighted by the yellow lines) to detach it from the adhesive tape underneath as shown in [Figure 1-35](#). Remove the touchpad FFC.
4. Disconnect the NFC FFC (D) from the NFC module and mainboard connectors. Then carefully lift the portion of FFC (highlighted by the yellow lines) to detach it from the adhesive tape underneath as shown in [Figure 1-35](#). Remove the NFC FFC.
5. Disconnect the NFC antenna cable from the NFC module connector (E) ([Figure 1-35](#)).

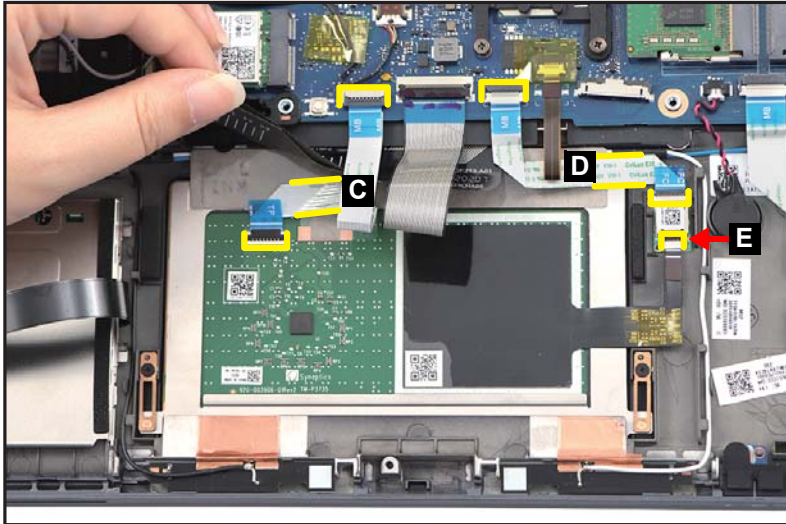


Figure 1-35. Touchpad Module Removal

⚠ CAUTION:

Touchpad FFC (Flexible Flat Circuit) and NFC FFC can be damaged if removed while the touchpad module, mainboard, and NFC module connectors are locked.

6. Lift slightly the mylar. Then detach the conductive tape (F) from the touchpad module and top assembly ([Figure 1-36](#)).
7. Detach the middle portion (G) of the NFC antenna cable from the top assembly. Then carefully remove the NFC antenna (H) from the touchpad module ([Figure 1-36](#)).

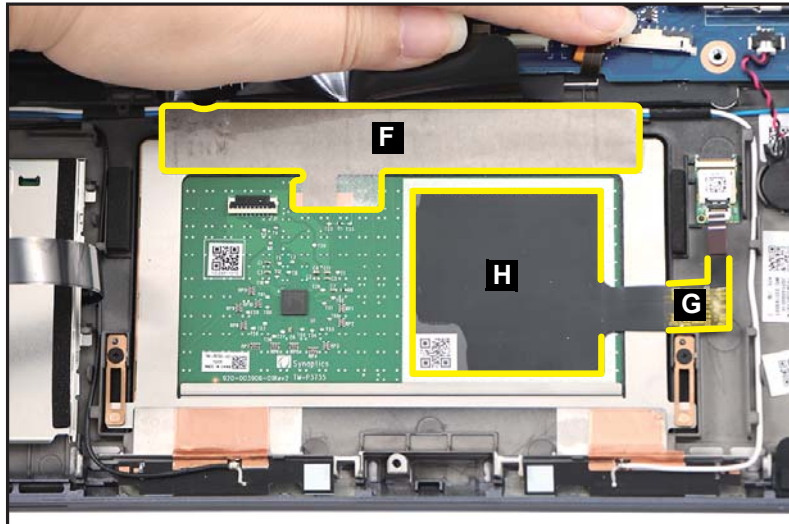


Figure 1-36. Touchpad Module Removal

8. Remove five (5) screws securing the arm brackets and touchpad module ([Figure 1-37](#)).

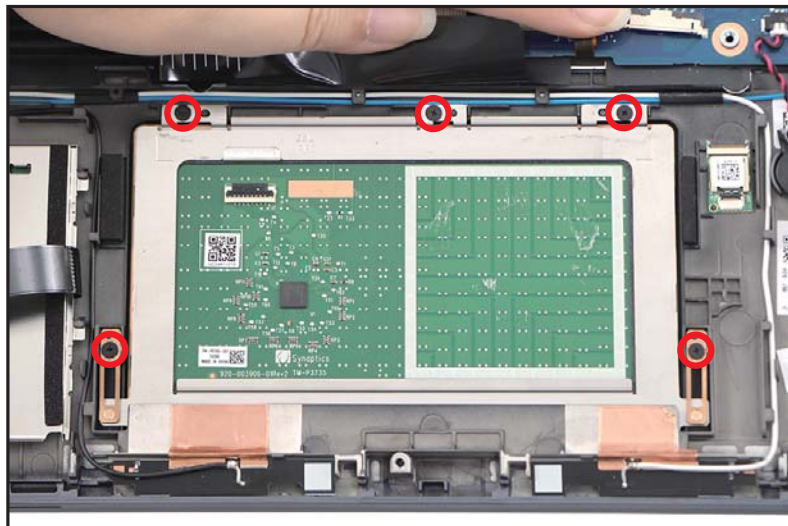


Figure 1-37. Touchpad Module Removal

9. Remove the arm brackets (I) from the top assembly (Figure 1-38).

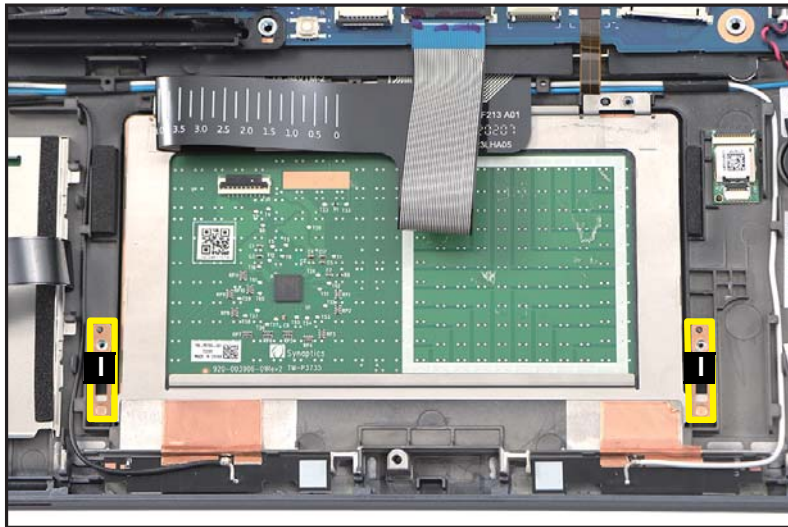


Figure 1-38. Touchpad Module Removal

10. With one hand is placed underneath the touchpad module (J), release the touchpad module from the top assembly and then remove (Figure 1-39).

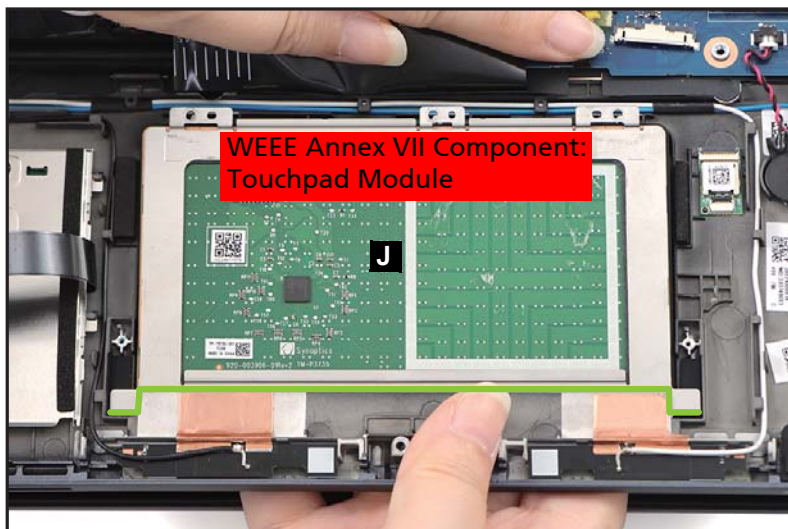


Figure 1-39. Touchpad Module Removal

Mainboard Removal

Prerequisite:

Ensure that the **DIMM Modules**, **Fan**, **Heatsink**, **Stylus Holder**, **LCD Module**, and **SSD Module** have been disassembled prior removing the mainboard.

1. Detach the tape (A) securing the keyboard backlight FPC connection ([Figure 1-40](#)).
2. Remove one (1) screw (B) from the I/O bracket ([Figure 1-40](#)).

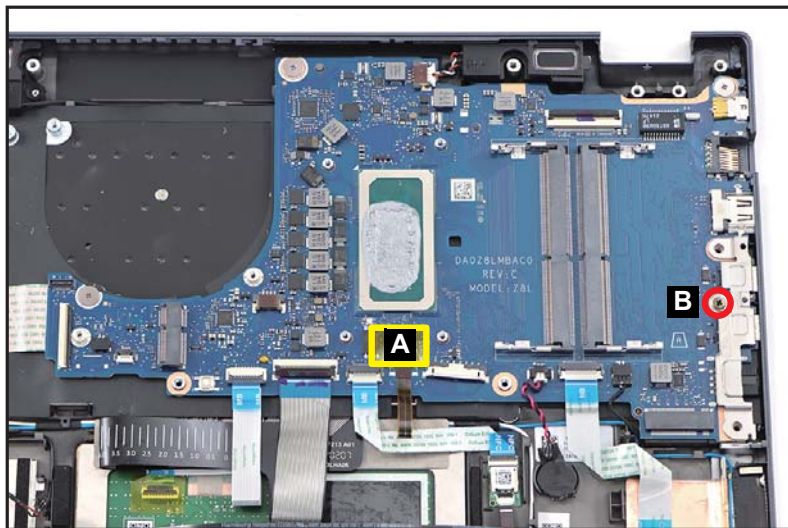


Figure 1-40. Mainboard Removal

3. Release the I/O bracket (C) from the guide pin (D) and guide tab (E) (Figure 1-41). Then remove the bracket.

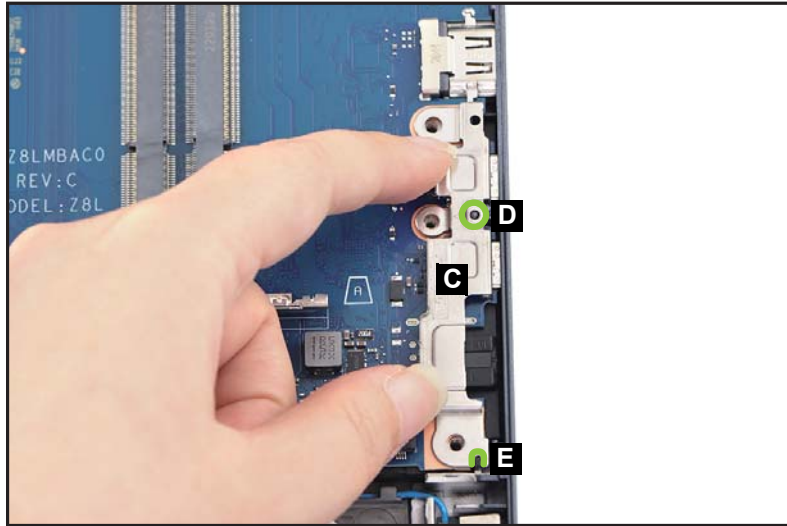


Figure 1-41. Mainboard Removal

4. Disconnect the DB FFC from the LTE board connector (F) (Figure 1-42).
5. Disconnect the touchpad FFC from the mainboard connector (G) (Figure 1-42).
6. Disconnect the keyboard FPC from the mainboard connector (H) (Figure 1-42).
7. Disconnect the NFC FFC from the mainboard connector (I) (Figure 1-42).
8. Disconnect the keyboard backlight FPC from the mainboard connector (J) (Figure 1-42).
9. Pry to detach the adhesive tape underneath the RTC battery (K) (Figure 1-42).
10. Disconnect the card reader board FFC from the mainboard connector (L) (Figure 1-42).
11. Disconnect the left speaker cable from the mainboard connector (M) (Figure 1-42).

12. Disconnect the rear speaker cable from the mainboard connector (N) (Figure 1-42).

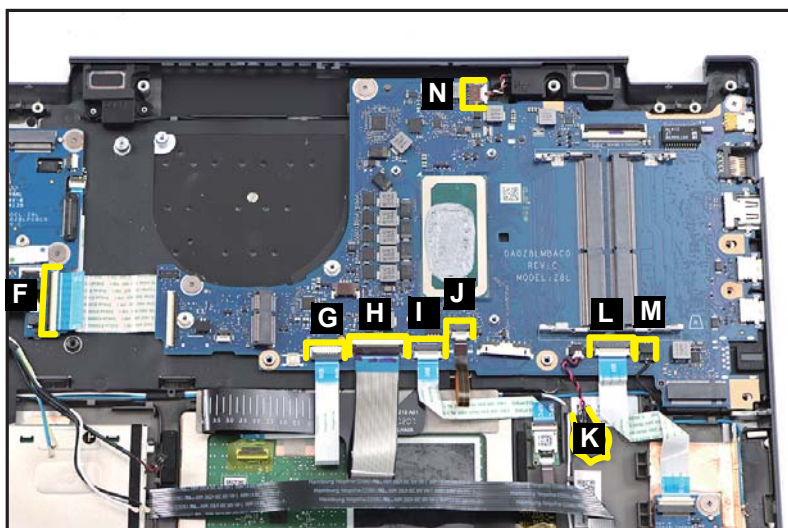


Figure 1-42. Mainboard Removal

⚠ CAUTION:

DB FFC (Flexible Flat Circuit), touchpad FFC, NFC FFC, card reader board FFC, keyboard FPC (Flexible Printed Circuit), and keyboard backlight FPC, can be damaged if removed while the LTE board and mainboard connectors are locked.

13. Remove three (3) screws (O) securing the mainboard (Figure 1-43).

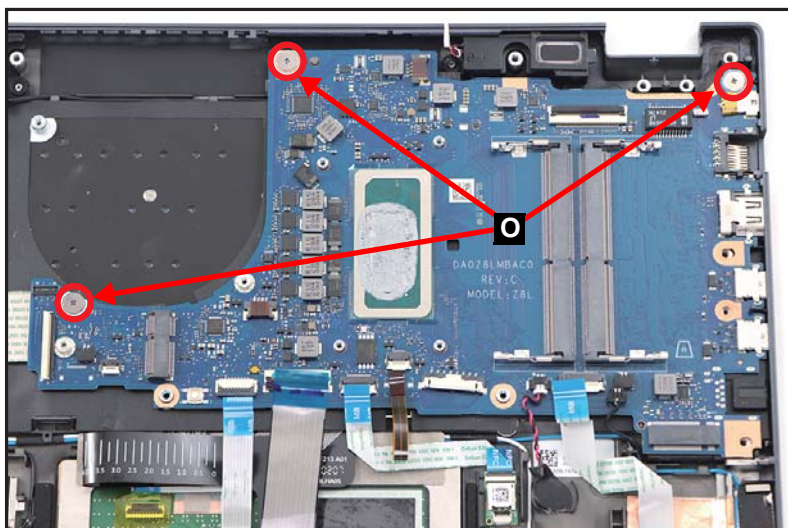


Figure 1-43. Mainboard Removal

14. Release the mainboard (P) from the I/O connectors slots and guide pins (Q) on the top assembly (Figure 1-44). Then remove the mainboard.

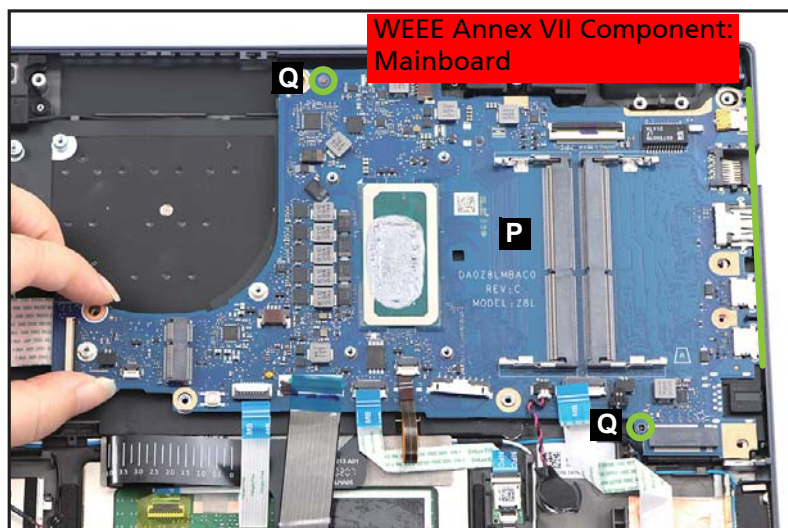


Figure 1-44. Mainboard Removal

15. Flip the mainboard and detach the tape (R) securing the DB FFC connection (Figure 1-45).

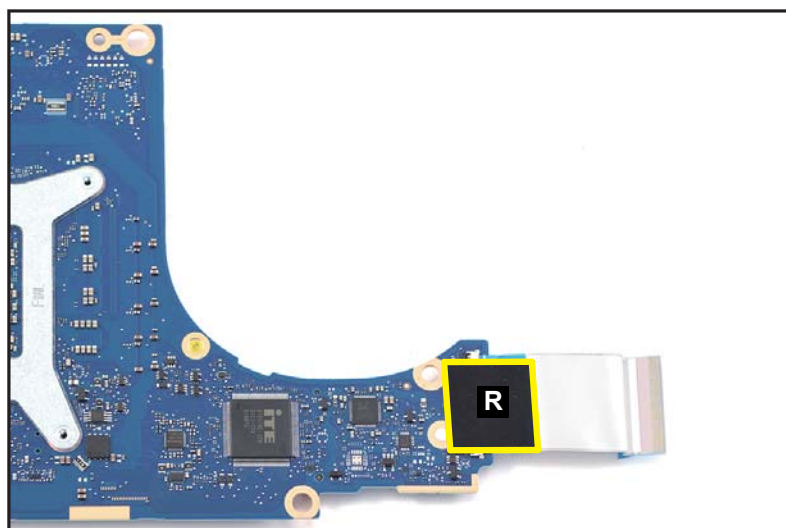


Figure 1-45. Mainboard Removal

16. Disconnect the DB FFC from the mainboard connector (S) (Figure 1-46). Then remove the FFC.

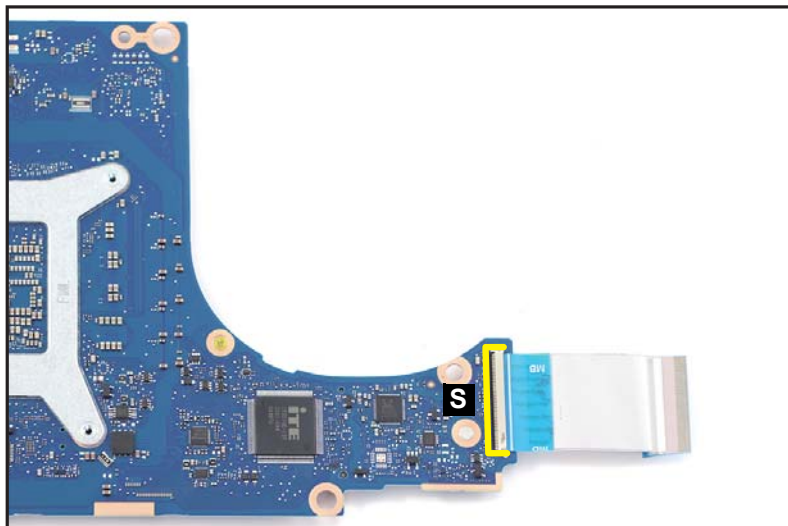


Figure 1-46. Mainboard Removal

⚠ CAUTION:

DB FFC (Flexible Flat Circuit) can be damaged if removed while the mainboard connector is locked.

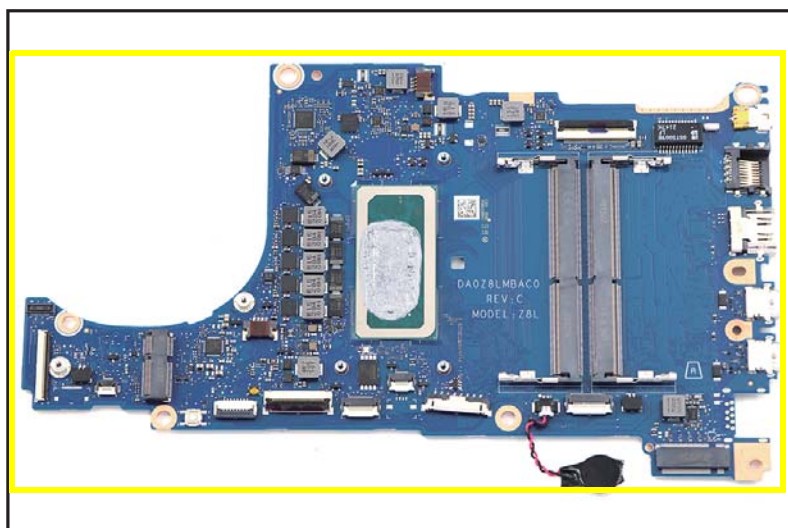


Figure 1-47. Mainboard

+ IMPORTANT:

Circuit board >10 cm² has been highlighted with a yellow rectangle as shown in Figure 1-47. Remove the circuit board and follow local regulations for disposal.

LCD Panel Removal (Convertible Model)

Prerequisite:

[LCD Module Removal](#)

⇒ NOTE:

The eDP cable includes the LCD panel cable, touch control board cable, and camera cable.

1. Starting near the camera module, pry the upper side of the LCD panel to release the latches ([Figure 1-48](#)).



Figure 1-48. LCD Panel Removal

2. Continue prying along the left and right sides of the LCD panel (Figure 1-49).



Figure 1-49. LCD Panel Removal

3. Continue prying the remaining latches on the bottom side of the LCD panel (Figure 1-50).
4. Release the eDP cable (A) from the LCD hinge cap. Then remove the LCD panel (B) from the LCD cover (Figure 1-50).

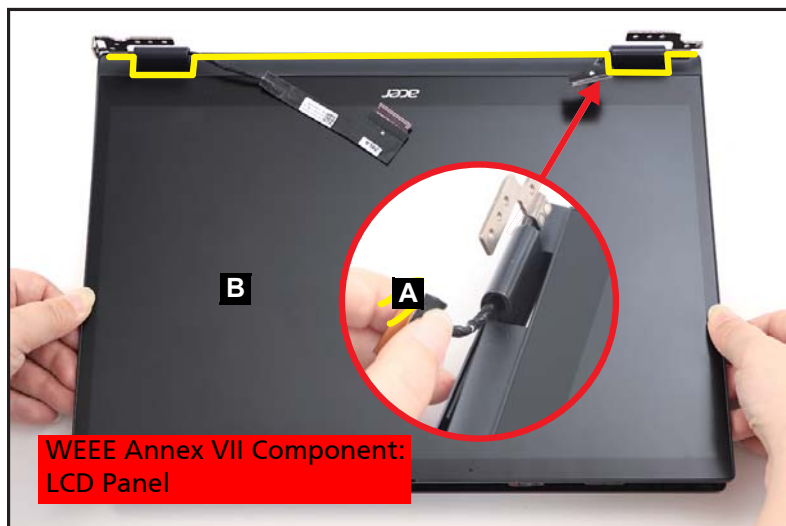


Figure 1-50. LCD Panel Removal

LCD Bezel Removal (Clamshell Model)

Prerequisite:

[LCD Module Removal](#)

1. Push down both hinges ([Figure 1-51](#)).



Figure 1-51. LCD Bezel Removal

2. Pry the LCD bezel from the bottom side to release the latches ([Figure 1-52](#)).



Figure 1-52. LCD Bezel Removal

3. Pry the LCD bezel from the right side to release the latches ([Figure 1-53](#)).

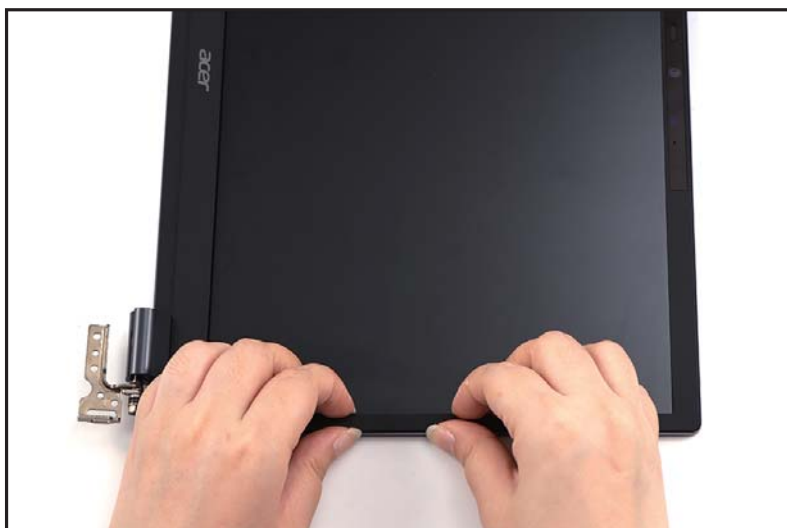


Figure 1-53. LCD Bezel Removal

4. Pry the LCD bezel from the left side to release the latches ([Figure 1-54](#)).



Figure 1-54. LCD Bezel Removal

5. Continue along the upper side of the bezel until all the latches have been released ([Figure 1-55](#)). Then remove the bezel from LCD module.



Figure 1-55. LCD Bezel Removal

LCD Panel Removal (Clamshell Model)

Prerequisite:

[LCD Bezel Removal \(Clamshell Model\)](#)

⇒ NOTE:

The eDP cable includes the LCD panel cable and camera cable.

1. Unroute the eDP cable (A) from the bottom side of the cable guides on the LCD cover as shown in [Figure 1-56](#). Carefully detach the cable from its underneath adhesive if necessary.

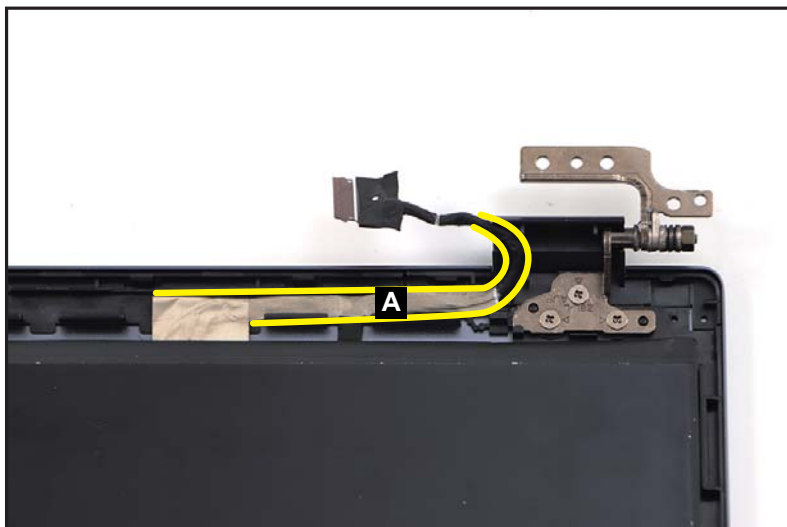


Figure 1-56. LCD Panel Removal

2. Pry slightly to access the double-sided mounting tape (B) underneath the LCD panel (C). Then pull to detach the double-sided mounting tape from the LCD cover. Repeat the same procedure to remove the double-sided mounting tape on another side of the LCD panel (Figure 1-57).

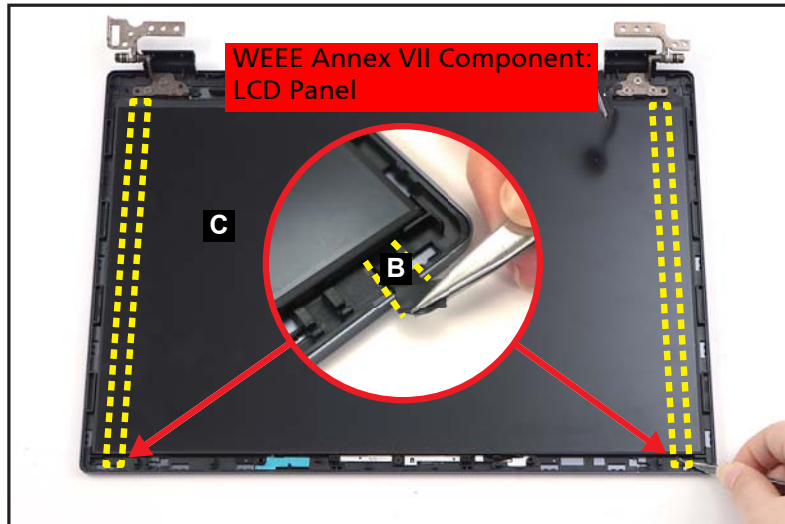


Figure 1-57. LCD Panel Removal

3. Carefully turn the LCD panel over so that the display panel is facing down on a flat surface. Then detach the mylar tape (D) securing the eDP cable to the LCD panel (Figure 1-58).



Figure 1-58. LCD Panel Removal

4. Lift the latch (E) securing the eDP cable (Figure 1-59).



Figure 1-59. LCD Panel Removal

5. Disconnect the eDP cable from the LCD panel connector (F) (Figure 1-60).

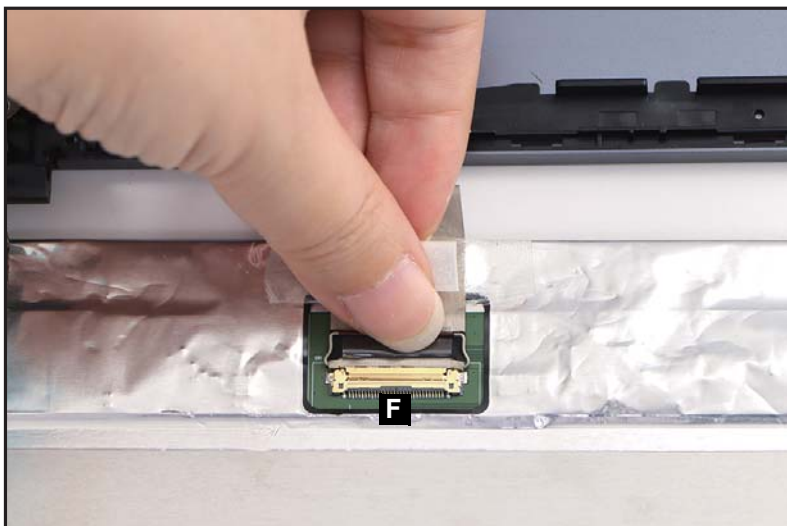


Figure 1-60. LCD Panel Removal

6. Remove the LCD panel from the LCD cover.

⚠ CAUTION:

Make sure the eDP cable is moved away from the device to avoid damage during LCD Panel removal.

Top Assembly Removal (Keyboard Removal)

Prerequisite:

Ensure that the **Smart Card Reader**, **Card Reader Board**, **NFC Module**, **Touchpad Module**, **Right Speaker**, **Fingerprint Module**, **Left Speaker**, and **Rear Speakers** have been disassembled prior removing the top assembly.

⇒ NOTE:

The keyboard is included as part of the top assembly and can not be disassembled. In the event that the keyboard can no longer be used, replace the entire top assembly.



Figure 1-61. Top Assembly (Keyboard)

Electronic Boards Diagrams

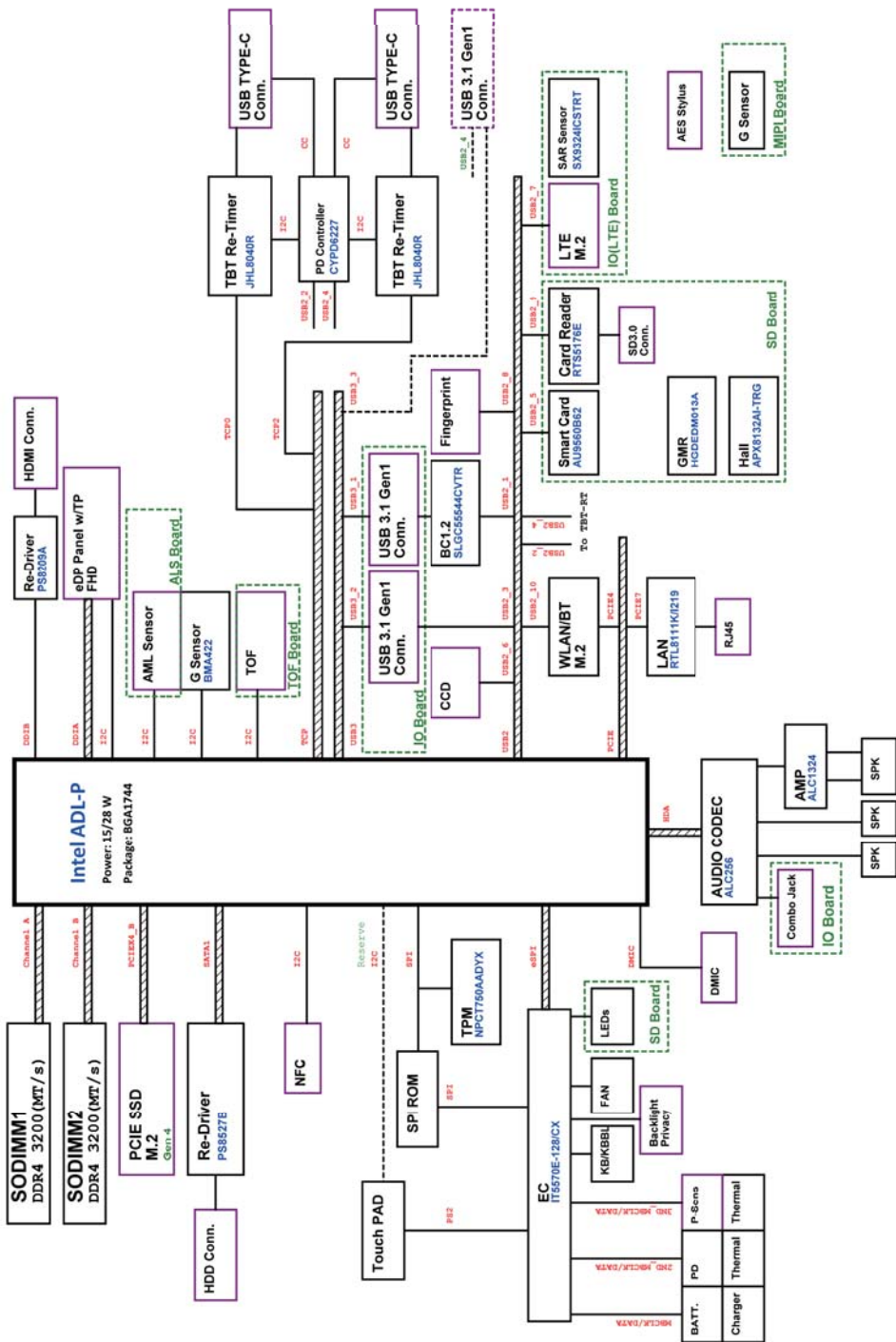


Figure 1-62. System Block Diagram

Troubleshooting

This chapter shows you how to deal with common system problems. Read it before calling a technician if a problem occurs. Solutions to more serious problems require opening up the computer. Do not attempt to open the computer yourself; contact your dealer or authorized service center for assistance.

Troubleshooting tips

This computer incorporates an advanced design that delivers on-screen error message reports to help you solve problems.

If the system reports an error message or an error symptom occurs, see “Error messages” below. If the problem cannot be resolved, contact your dealer.

Error messages

If you receive an error message, note the message and take the corrective action. The following table lists the error messages in the alphabetical order together with the recommended course of action.

Table 1-1. Error Messages

Error Messages	Corrective Action
CMOS battery bad	Contact your dealer or an authorized service center.
CMOS checksum error	Contact your dealer or an authorized service center.
Disk boot failure	Insert a system (bootable) disk, then press Enter to reboot.
Equipment configuration error	Press F2 (during POST) to enter BIOS utility, then press Exit in the BIOS utility to reboot.
Hard disk 0 error	Contact your dealer or an authorized service center.
Hard disk 0 extended type error	Contact your dealer or an authorized service center.
I/O parity error	Contact your dealer or an authorized service center.
Keyboard error or no keyboard connected	Contact your dealer or an authorized service center.
Keyboard interface error	Contact your dealer or an authorized service center.
Memory size mismatch	Press F2 (during POST) to enter BIOS utility, then press Exit in the BIOS utility to reboot.

If you still encounter problems after going through the corrective measures, please contact your dealer or an authorized service center for assistance.

FRU (Field Replaceable Unit) List

Please contact your local service center to find out how to obtain the part or replace your device.

Exploded Diagrams

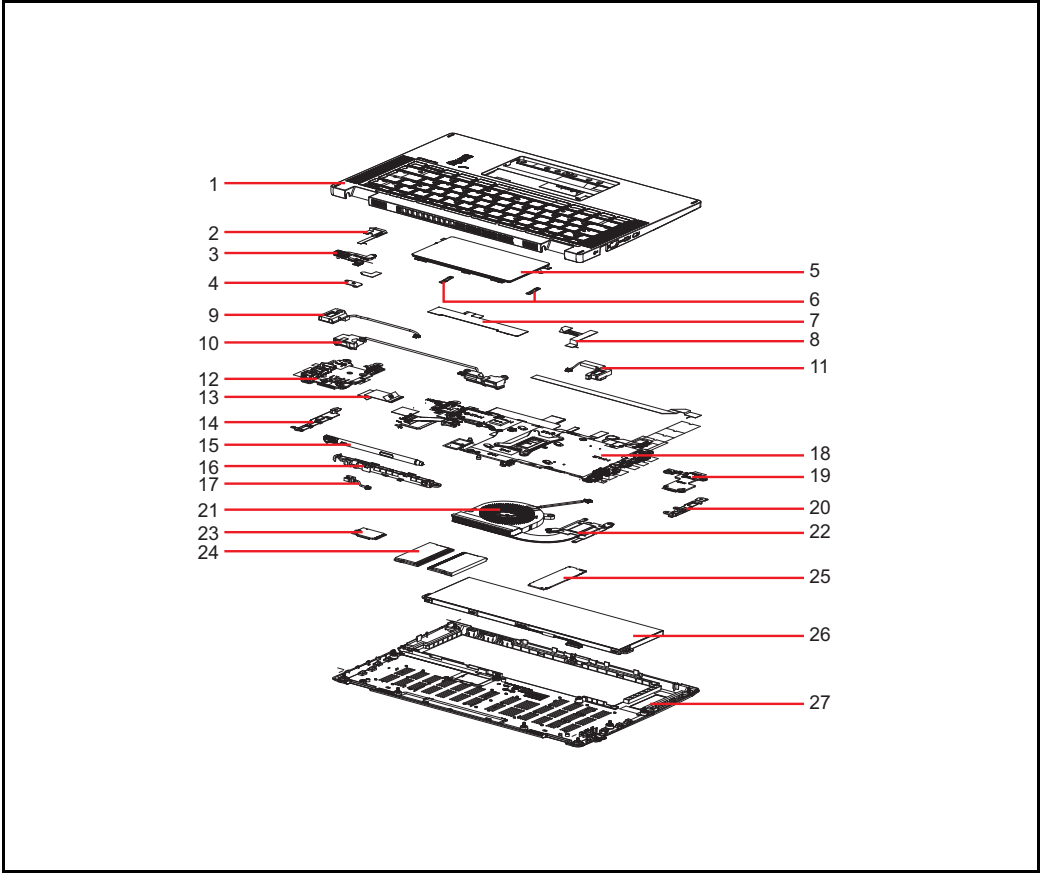


Figure 1-63. System Exploded Diagram

Table 1-2. System Exploded Diagram

No.	Description
1	Top Assembly
2	Fingerprint FFC
3	Fingerprint Module
4	Fingerprint Bracket
5	Touchpad Module
6	Touchpad Arm Brackets
7	Conductive Tape
8	Touchpad FFC
9	Right Speaker
10	Rear Speakers

Table 1-2. System Exploded Diagram (Continued)

No.	Description
11	Left Speaker
12	LTE Board
13	DB FFC
14	Right I/O Bracket
15	Stylus Pen
16	Stylus Holder
17	Stylus Charger Cable
18	Mainboard
19	Card Reader Board
20	Left I/O Bracket
21	Fan
22	Heatsink
23	WLAN Module
24	DIMM Module
25	SSD Module
26	Battery Pack
27	Base Cover

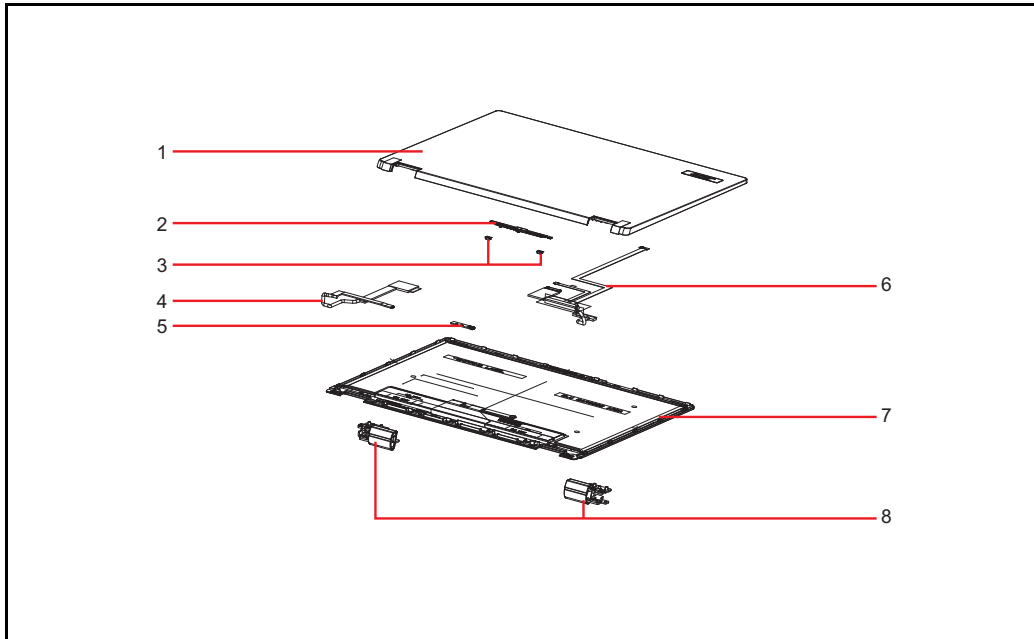


Figure 1-64. LCD Assembly Exploded Diagram (Convertible Model)

Table 1-3. LCD Assembly Exploded Diagram (Convertible Model)

No.	Description
1	LCD Cover
2	Camera Module
3	Microphone Rubbers
4	LCD cable (includes G-sensor cable, light sensor cable, and TOF sensor cable)
5	G-Sensor Board
6	eDP cable (include LCD panel cable, touch control board cable, and camera cable)
7	LCD Module
8	LCD Hinge L
	LCD Hinge R

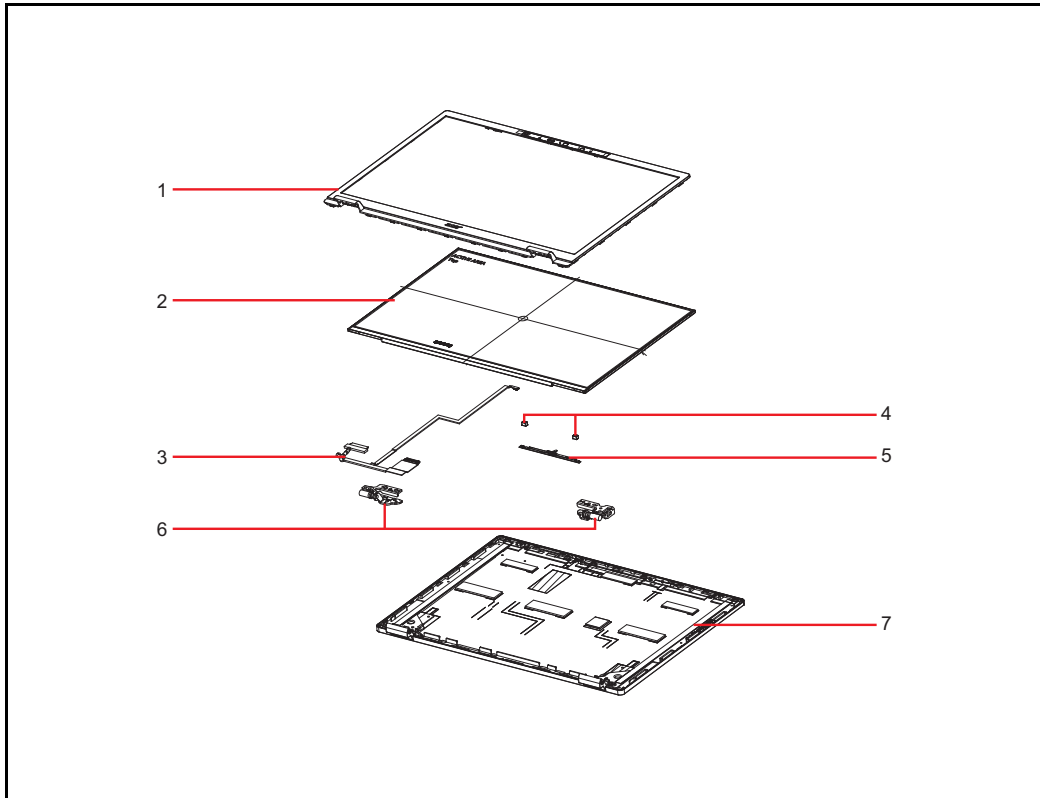


Figure 1-65. LCD Assembly Exploded Diagram (Clamshell Model)

Table 1-4. LCD Assembly Exploded Diagram (Clamshell Model)

No.	Description
1	LCD Bezel
2	LCD Panel
3	eDP Cable (includes LCD panel cable and camera cable)
4	Microphone Rubbers
5	Camera Module
6	LCD Hinge L
	LCD Hinge R
7	LCD Cover

Software Update







Updating your software

Please visit <http://go.acer.com/?id=17883>

Personal Data Removal

Removing your personal data

There are three options to choose from:

- Option 1: Select **Start**  > **Settings**  > **Update & Security**  > **Recovery**. Under **Reset this PC**, select **Get started**. Open **Recovery settings**.
- Option 2: Restart your PC to get to the sign-in screen, then press and hold down the **Shift key** while you select the **Power**  icon > **Restart** in the lower-right corner of the screen. After your computer restarts, select **Troubleshoot** > **Reset this PC**.
- Option 3: Select **Start** , then press and hold down the **Shift key** while you select the **Power**  icon > **Restart** to restart your computer into Recovery Mode. After your computer restarts, select **Troubleshoot** > **Reset this PC**.